

# HONDA CB125R/CB300R NEO SPORTS CAFE '24-

## M O U N T I N G I N S T R U C T I O N S

REF 22296

WINDSHIELD NEW GENERATION SPORT



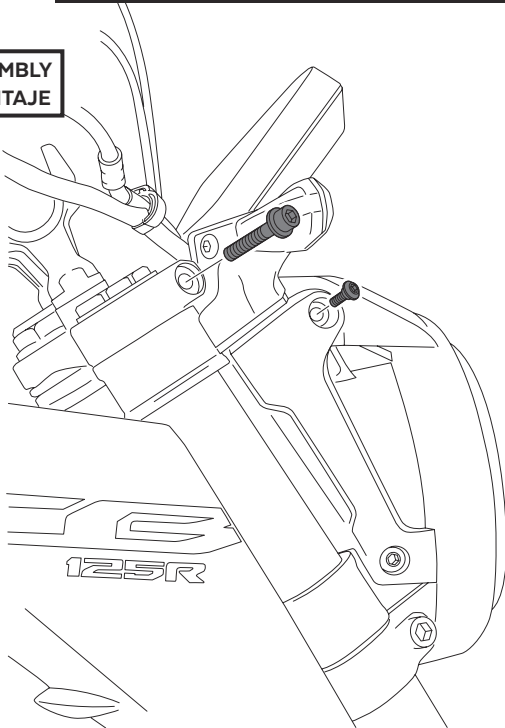
ID	PIEZA/PART	DESCRIPCIÓN	DESCRIPTION	QTY	REF
1		Cúpula sport	Sport Screen	1	10639W/H/F/N/JM3
2		Soporte derecho	Right support ( R )	1	SOPOR2P2-R22296
3		Soporte izquierdo	Left support ( L )	1	SOPOR2P2-L22296
4		Tapón tornillo M8 DIN912	M8 DIN912 screw cap	2	TAPA--CHC11450E
5		Tornillo Allen DIN912 M8x45	M8x45 DIN912 Allen screw	2	TORNI-AD912-508
6		Casquillo Ø 8,5x Ø 13x 12	Ø 8,5x Ø 13x 12 arrowhead	2	CASQUI-M----769
7		Tornillo M5x45 Ø11 ISO 7380	M5x45 Ø11 ISO 7380 Allen screw	2	TORNI-I7380-657
8		Casquillo Ø 6,5x Ø 12x 28	Ø 6,5x Ø 12x 28 Arrowhead	2	CASQUI-C----460
9		Arandela de goma Ø4,5 x Ø11 x 2mm	Ø4,5 x Ø11 x 2mm Rubber washer	4	ARAND-EPDM--722
10		Arandela de nylon M5	M5 Nylon washer	4	ARNV000000000245
11		Tornillo Allen M5x12 Ø11 ISO 7380	M5x12 Ø11 ISO 7380 allen screw	4	TORNI-AI----520
12		Tapón tornillo M5 ISO 7380	M5 ISO 7380 screw cap	6	TAPON-----85

# HONDA CB125R/CB300R NEO SPORTS CAFE '24-

INSTRUCCIONES DE MONTAJE - MOUNTING INSTRUCTIONS - MONTAGEANLEITUNG

**1**

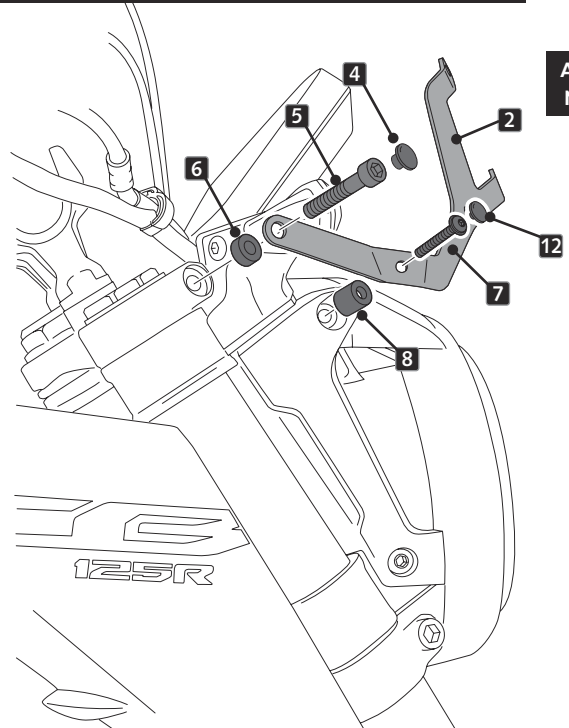
DISASSEMBLY  
DESMONTAJE



Se muestra el montaje del lado derecho a modo de ejemplo, realizar los mismos pasos para el montaje del lado izquierdo.  
The right side assembly is shown as an example, so the same steps can be performed for the left side assembly.

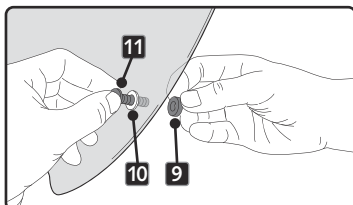
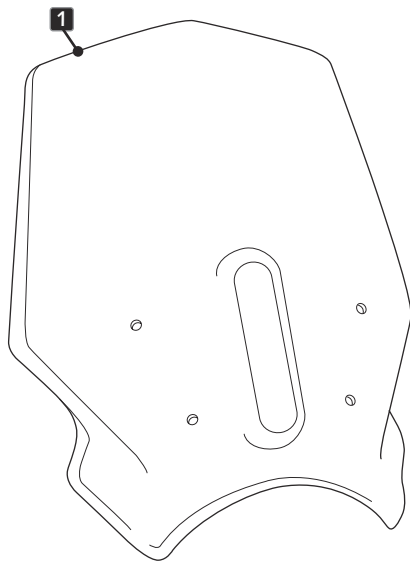
**2**

ASSEMBLY  
MONTAJE



**3**

ASSEMBLY  
MONTAJE



**4**

ASSEMBLY  
MONTAJE

